

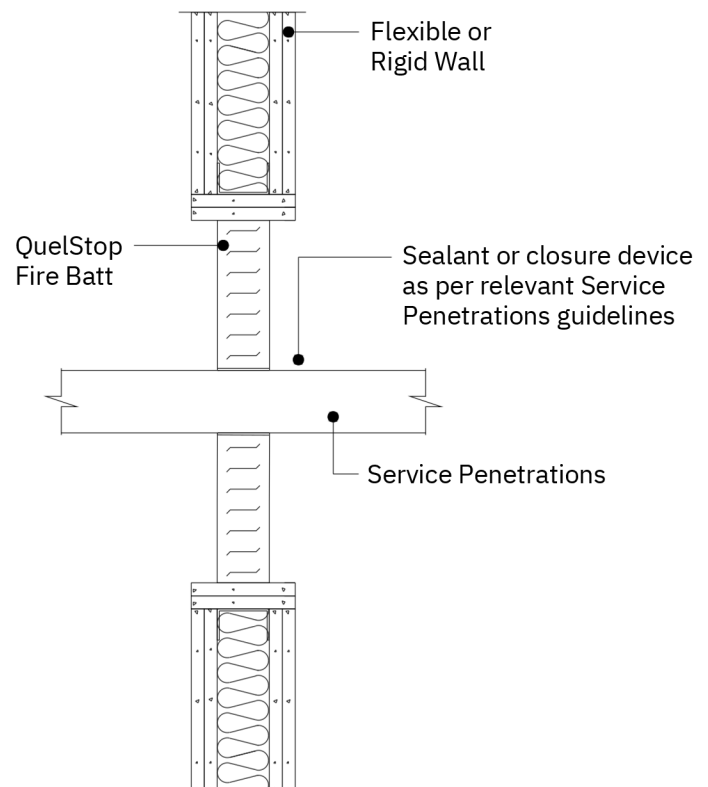
QuelStop Fire Batt INSTALLATION INSTRUCTIONS

This installation guide is intended for general information only and all details should be checked against relevant supporting test evidence and certification.



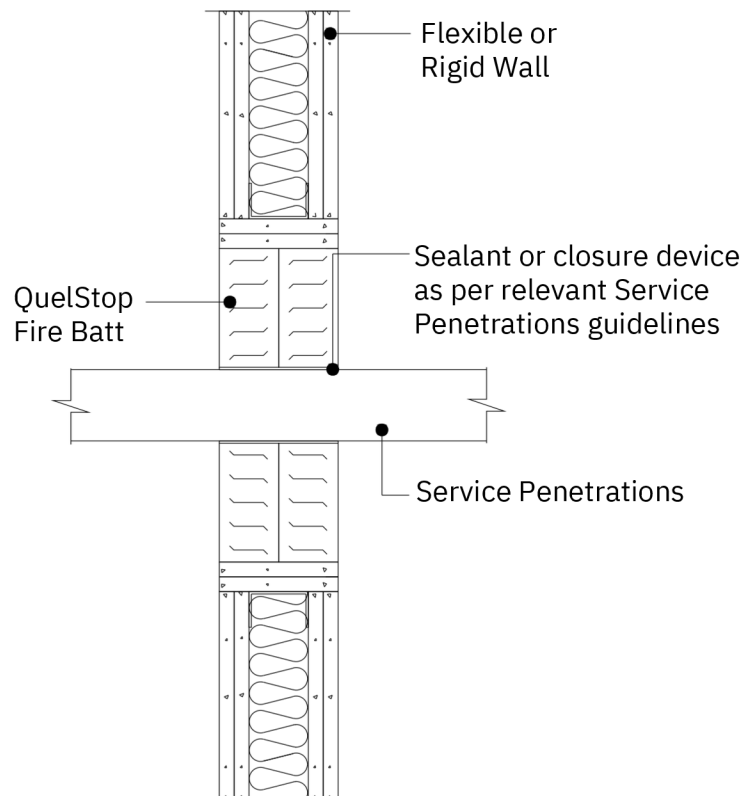
WALL INSTALLATION: SINGLE QUELSTOP FIRE BATT

1. Make sure that the area within the aperture is clean of any debris and remove dust from all edges.
2. Cut QuelStop Fire Batt to the size and shape required to fit the aperture, ensuring the QuelStop Fire Batt will have a tight fit within all the edges of the aperture.
3. Cut holes in the QuelStop Fire Batt to accommodate the penetrating services. (Follow the relevant guidance suitable for the type and size of service)
4. Cut the QuelStop Fire Batt across its width at the midpoint of each hole to allow the QuelStop Fire Batt to be fitted into the aperture around the services.
5. Apply QuelStop Intumescent Acrylic Sealant around the perimeter in the centre of the aperture where the batt is to be installed.
6. Apply QuelStop Intumescent Acrylic Sealant to all edges, cuts and joints of the QuelStop Fire Batt including the service penetration hole unless QuelStop HPE Sealant is required. (Follow the relevant guidance suitable for the type and size of service) Use a spatula to smooth the QuelStop Intumescent Acrylic Sealant evenly to cover over the entire thickness of the QuelStop Fire Batt.
7. Insert the section of the QuelStop Fire Batt into the aperture around the services.
8. Apply a bead of QuelStop Intumescent Acrylic Sealant to all joints and the perimeter on both sides of the seal ensuring all gaps are fully filled and sealed. Use a spatula to smooth off. Repeat on the other side of the seal.
9. Follow the relevant guidance for the correct Quelfire Sealant or closure device depending on the type and size of the services penetrating the QuelStop Fire Batt.
10. Apply QuelStop Ablative Coating to repair any damage to the QuelStop Fire Batt coating that may have occurred during installation. Repeat on the other side of the seal.



WALL INSTALLATION: DOUBLE QUELSTOP FIRE BATT

1. Make sure that the area within the aperture is clean of any debris and remove dust from all edges.
2. Cut QuelStop Fire Batt to the size and shape required to fit the aperture, ensuring the QuelStop Fire Batt will have a tight fit within all the edges of the aperture.
3. Cut holes in the QuelStop Fire Batt to accommodate the penetrating services. (Follow the relevant guidance suitable for the type and size of service)
4. Cut the QuelStop Fire Batt across its width at the midpoint of each hole to allow the QuelStop Fire Batt to be fitted into the aperture around the services.
5. Apply QuelStop Intumescent Acrylic Sealant around the perimeter in the centre of the aperture where the batt is to be installed.
6. Apply QuelStop Intumescent Acrylic Sealant to all edges, cuts and joints of the QuelStop Fire Batt including the service penetration hole unless QuelStop HPE Sealant is required. (Follow the relevant guidance suitable for the type and size of service) Use a spatula to smooth the QuelStop Intumescent Acrylic Sealant evenly to cover over the entire thickness of the QuelStop Fire Batt.
7. Insert the section of the QuelStop Fire Batt into the aperture around the services
8. Apply a bead of QuelStop Intumescent Acrylic Sealant to all joints and the perimeter of the seal ensuring all gaps are fully filled and sealed. Use a spatula to smooth off.
9. Follow the relevant guidance for the correct Quelfire Sealant or closure device depending on the type and size of the services penetrating the QuelStop Fire Batt.
10. Repeat sections 1 – 9 for the second layer of QuelStop Fire Batt.
11. Apply QuelStop Ablative Coating to repair any damage to the QuelStop Fire Batt coating that may have occurred during installation. Repeat on the other side of the seal.



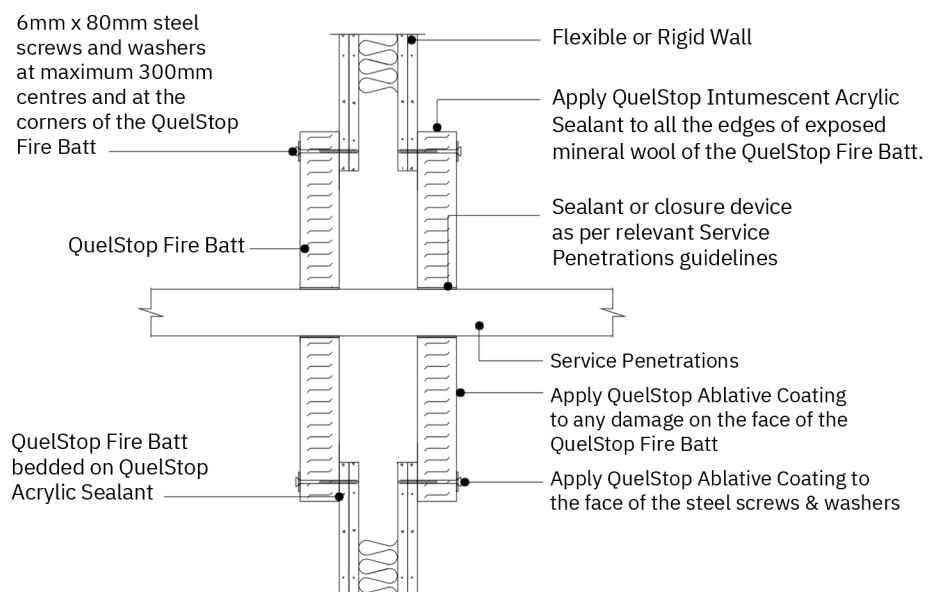
WALL INSTALLATION: PATTERN FITTED QUELSTOP FIRE BATT

1. Cut the QuelStop Fire Batt to the size and shape required to pattern fit the aperture, ensuring the QuelStop Fire Batt will overlap the aperture on all sides, typically by at least 50mm on all sides, except the bottom edge, which can be 30mm. (Please refer to test evidence for further guidance)
2. Cut holes in the QuelStop Fire Batt to accommodate the penetrating services. (Follow the relevant guidance suitable for the type and size of service)
3. Cut the QuelStop Fire Batt across its width at the midpoint of each hole to allow the QuelStop Fire Batt to be fitted around the services.
4. Apply QuelStop Intumescent Acrylic Sealant to all cuts and joints of the QuelStop Fire Batt including the service penetration hole unless QuelStop HPE Sealant is required. (Follow the relevant guidance suitable for the type and size of service) Use a spatula to smooth the QuelStop Intumescent Acrylic Sealant evenly to cover over the entire thickness of the QuelStop Fire Batt.
5. Apply a bead of QuelStop Intumescent Acoustic Sealant to the face of the wall around the opening of the aperture where the batt is to overlap.
6. Place the sections of the QuelStop fire batt onto the wall around the services. The QuelStop fire batt must be fixed to the wall using the following fixtures:

Flexible Plasterboard walls: 80mm steel screws with a 25mm steel retaining washer in each corner of the seal, at maximum 300mm centres, and between 25 and 50mm from any joints of the pieces making up the overall seal. Ensure the fixing is positioned in the centre of the batt overlap.

Rigid Concrete/ Masonry Walls: 6mm x 100mm countersunk screws with a 25mm steel retaining washer in each corner of the seal, at maximum 300mm centres, and between 25 and 50mm from any joints of the pieces making up the overall seal. Ensure the fixing is positioned in the centre of the batt overlap.

7. Apply QuelStop Intumescent Acrylic Sealant to all the edges of exposed mineral wool of the QuelStop Fire Batt. Ensure any small gaps between the batt and substrate are fully filled with sealant. Use a spatula to smooth the QuelStop Intumescent Acrylic Sealant evenly to cover over the entire thickness of the QuelStop Fire Batt.
8. Follow the relevant guidance for the correct Quelfire Sealant or closure device depending on the type and size of the services penetrating the QuelStop Fire Batt.
9. Apply QuelStop Ablative Coating to repair any damage to the coating on the QuelStop Fire Batt that may have occurred during installation.
10. Apply QuelStop Intumescent Acrylic Sealant or Ablative Coating to the face of the screws and washers.
11. Repeat sections 1 – 10 for second layer of QuelStop Fire Batt on the other side of the wall.



FLOOR INSTALLATION: DOUBLE QUELSTOP FIRE BATT

1. Make sure that the area within the aperture is clean of any debris and remove dust from all edges.
2. Cut QuelStop Fire Batt to the size and shape required to fit the aperture, ensuring the QuelStop Fire Batt will have a tight fit within all the edges of the aperture.
3. Cut holes in the QuelStop Fire Batt to accommodate the penetrating services. (Follow the relevant guidance suitable for the type and size of service)
4. Cut the QuelStop Fire Batt across its width at the midpoint of each hole to allow the QuelStop Fire Batt to be fitted into the aperture.
5. Apply QuelStop Intumescent Acrylic Sealant to the perimeter of the aperture where the batt seal is to be installed.
6. Apply QuelStop Intumescent Acrylic Sealant to all edges, cuts and joints including the service penetration hole unless QuelStop HPE Sealant is required as a closure device. (Follow the relevant guidance suitable for the type and size of service) Use a spatula to smooth the QuelStop Intumescent Acrylic Sealant evenly to cover over the entire thickness of the QuelStop Fire Batt.
7. Insert the section of the QuelStop Fire Batt into the aperture within the floor.

Apply a bead of QuelStop Intumescent Acrylic Sealant to all joints and the perimeter of the seal ensuring all gaps are fully filled
8. and sealed. Use a spatula to smooth off.
9. Follow the relevant guidance for the correct Quelfire Sealant or closure device depending on the type and size of the services penetrating the QuelStop Fire Batt.
10. Repeat sections 1 – 9. for second layer of QuelStop Fire Batt.
11. Apply QuelStop Ablative Coating to repair any damage to the QuelStop Fire Batt coating that may have occurred during installation. Repeat on the other side of the seal.

Technical Support & Guidance: Should you require any further information regarding this product, please do not hesitate to contact the technical department at Quelfire Ltd.

Tel: 0161 928 7308

Email: technical@quelfire.co.uk

Please be aware that this document is intended for general information only and all details should be checked against all relevant supporting test evidence, certification and installation guidelines. Use of alternative components or deviations from the instructions in any way is likely to mean that the installation will not comply with the assessed rating. Quelfire Ltd does not accept responsibility for the consequences of using Quelfire products in applications or for purposes not authorised by Quelfire Ltd. Expert advice should be sought where such applications are contemplated.

The policy of Quelfire Ltd is one of constant improvement. Installers should therefore ensure they are working from the latest published drawings and instructions. Whilst Quelfire will endeavour to keep its publications up to date, the accuracy of the information contained within this drawing may be affected by pertinent changes in the law or regulatory requirements and alterations or amendments to the specification of Quelfire products.

All information contained in this document is given in good faith and is provided for guidance only. Any drawings provided are for illustrative purposes only. As Quelfire Ltd has no control over the methods or competence of installation and of prevailing site conditions, no warranties, expressed or implied, is intended to be given as to the actual performance of the product mentioned or referred to herein and no liability whatsoever will be accepted for any loss, damage or injury arising from the use of the information given.